



产品结构 Structure Feature

滑动层: PTFE纤维与高强度纤维织物填充特种润滑剂树脂;
承载层: 高强度玻璃纤维长丝增强特种高温高强度环氧树脂。





Sliding layer: Continuous wound PTFE and high-strength fibers encapsulated in special lubricating resin as internally lubricating liner.

Backing: Continuous wound glass fiber encapsulated in a high temperature epoxy resin.

典型特征 Typical Characteristics

- 极高的动承载能力, 最高140Mpa;
- 优秀的耐磨性能;
- 极低的摩擦系数, 摩擦系数<0.12;
- 长期干运行, 禁止加油。
- Very high load capacity, Max. 140Mpa;
- Very good chemical resistance;
- Lower friction and good wear properties. Friction coefficient<0.12;
- Long time dry operation without oil.

材料性能数据表 The Material Data Sheet

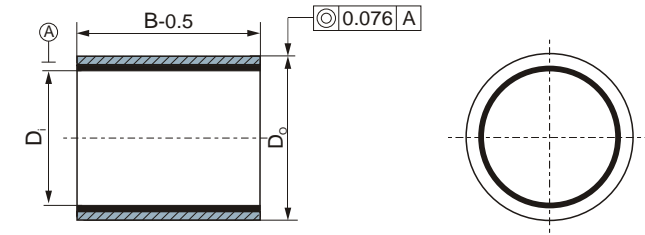
一般性能 Common Capability	单位 Unit	 CSB-CRG	 CSB-CRB	 CSB-CRP	 CSB-CRF
基本类型 Basic type		高载型High load	标准型Standard	高速型High speed	经济型Economic
密度 Density	g/cm ³	2.00	2.00	2.00	1.30
极限PV值 Max. PV (dry)	N/mm ² *m/s	2.0	1.8	1.6	1.2
摩擦系数 Coefficient of friction		0.03~0.12	0.03~0.12	0.02~0.12	0.15~0.30
工作温度 Working Temp.	°C	-100~+160	-100~+160	-100~+160	-40~+130
最大表面速度 Max. Speed	m/s	0.20	0.20	0.40	0.13
最大载荷 Max. load	MPa	420	420	420	300
静载荷 Static load	MPa	240	240	240	150
动载荷 Dynamic friction /steel(dry)	MPa	160	140	30	45
径向压溃强度 Radial compressive strength	MPa	550	550	550	200
洛氏硬度 Rockwell hardness	HRR	95	95	95	90
线性热膨胀系数 Linear coef. of thermal Expansion(25 ~ 150°C)	10 ⁻⁶ *K ⁻¹	13	13	13	40
颜色 Color		黑色Black	咖啡色Coffee	乳白色White	深灰色Dark grey

CSB-CR 纤维缠绕轴承尺寸表 Filament-wound Bearings Size Table

可供规格 Specifications:

订货型号Order:

CRG-35 41-30
 长度 Length
 内径 D_i
 外径 D_o
 材料 Materials:
 CRG, CRB, CRP, CRF



订货型号 Order Spec.	轴承尺寸 Bearing Size		推荐尺寸 Recommend		装配间隙 Assembly interference	运行间隙 Running clearance	标准长度 Standard length B
	内径 D _i	外径 D _o	轴 Shaft D _s h7	孔 Housing H7 D _h			
CRG-2025-L	20 +0.196/+0.116	25 +0.096/+0.046	20 0/-0.021	25 +0.021/0	0.025-0.096	0.020-0.192	15, 20, 30
CRG-2227-L	22 +0.196/+0.116	27 +0.096/+0.046	22 0/-0.021	27 +0.021/0	0.025-0.096	0.020-0.192	15, 20, 30
CRG-2530-L	25 +0.196/+0.116	30 +0.096/+0.046	25 0/-0.021	30 +0.021/0	0.025-0.096	0.020-0.192	20, 30, 40
CRG-2834-L	28 +0.200/+0.120	34 +0.100/+0.050	28 0/-0.021	34 +0.025/0	0.025-0.100	0.020-0.196	20, 30, 40
CRG-3036-L	30 +0.200/+0.120	36 +0.100/+0.050	30 0/-0.021	36 +0.025/0	0.025-0.100	0.020-0.196	20, 30, 40
CRG-3541-L	35 +0.200/+0.120	41 +0.100/+0.050	35 0/-0.025	41 +0.025/0	0.025-0.100	0.020-0.200	30, 40, 50
CRG-4048-L	40 +0.200/+0.120	48 +0.100/+0.050	40 0/-0.025	48 +0.025/0	0.025-0.100	0.020-0.200	30, 40, 60
CRG-4553-L	45 +0.230/+0.130	53 +0.105/+0.055	45 0/-0.025	53 +0.030/0	0.025-0.105	0.025-0.230	30, 40, 60
CRG-5058-L	50 +0.230/+0.130	58 +0.105/+0.055	50 0/-0.025	58 +0.030/0	0.025-0.105	0.025-0.230	40, 50, 60
CRG-5563-L	55 +0.245/+0.145	63 +0.120/+0.070	55 0/-0.030	63 +0.030/0	0.040-0.120	0.025-0.235	40, 55, 70
CRG-6070-L	60 +0.245/+0.145	70 +0.120/+0.070	60 0/-0.030	70 +0.030/0	0.040-0.120	0.025-0.235	40, 60, 80
CRG-6575-L	65 +0.245/+0.145	75 +0.120/+0.070	65 0/-0.030	75 +0.030/0	0.040-0.120	0.025-0.235	50, 60, 80
CRG-7080-L	70 +0.245/+0.145	80 +0.120/+0.070	70 0/-0.030	80 +0.030/0	0.040-0.120	0.025-0.235	50, 70, 90
CRG-7585-L	75 +0.275/+0.175	85 +0.125/+0.075	75 0/-0.030	85 +0.035/0	0.040-0.125	0.050-0.265	50, 70, 90
CRG-8090-L	80 +0.275/+0.175	90 +0.125/+0.075	80 0/-0.030	90 +0.035/0	0.040-0.125	0.050-0.265	60, 80, 100
CRG-8595-L	85 +0.275/+0.175	95 +0.125/+0.075	85 0/-0.035	95 +0.035/0	0.040-0.125	0.050-0.270	60, 80, 100
CRG-90105-L	90 +0.275/+0.175	105 +0.125/+0.075	90 0/-0.035	105 +0.035/0	0.050-0.135	0.050-0.270	60, 80, 120
CRG-95110-L	95 +0.310/+0.185	110 +0.135/+0.085	95 0/-0.035	110 +0.035/0	0.050-0.135	0.050-0.295	60, 80, 120
CRG-100115-L	100 +0.310/+0.185	115 +0.135/+0.085	100 0/-0.035	115 +0.035/0	0.050-0.135	0.050-0.295	80, 100, 120
CRG-110125-L	110 +0.315/+0.190	125 +0.135/+0.085	110 0/-0.035	125 +0.040/0	0.050-0.140	0.050-0.300	80, 100, 120
CRG-120135-L	120 +0.340/+0.215	135 +0.165/+0.090	120 0/-0.035	135 +0.040/0	0.050-0.165	0.050-0.325	100, 120, 150
CRG-130145-L	130 +0.340/+0.215	145 +0.165/+0.090	130 0/-0.040	145 +0.040/0	0.050-0.165	0.050-0.330	100, 120, 150
CRG-140155-L	140 +0.340/+0.215	155 +0.165/+0.090	140 0/-0.040	155 +0.040/0	0.050-0.165	0.050-0.330	100, 150, 180
CRG-150165-L	150 +0.340/+0.215	165 +0.165/+0.090	150 0/-0.040	165 +0.040/0	0.050-0.165	0.050-0.330	120, 150, 180

*每种材料可供规格请查询网站: www.csb-ep.com *Please check: www.csb-ep.com for the standard size of each material